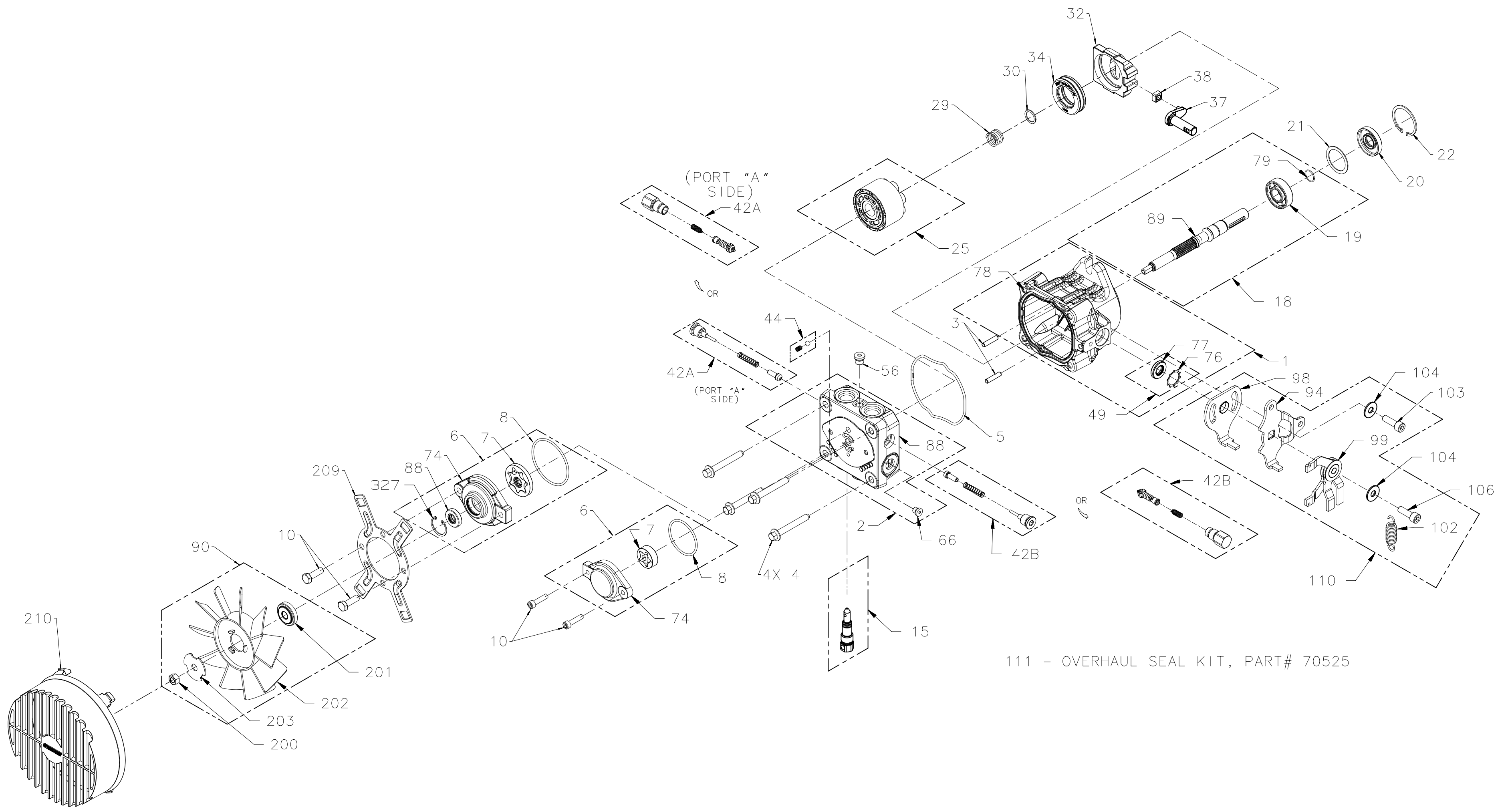


PE SERVICE SCHEMATIC



PE SERVICE SCHEMATIC

MODEL NUMBER:

P	E
---	---

 -

*			
---	--	--	--

 -

*		*	*
---	--	---	---

 -

--	--	--	--

 CHARACTER #:

1	2
---	---

 -

3	4	5	6
---	---	---	---

 -

7	8	9	10
---	---	---	----

 -

11	12	13	14
----	----	----	----

END CAP AND INPUT SHAFT KITS

CHARACTER 3	ITEM #	COMPONENT #	DESCRIPTION	QTY	CONTAINS ITEMS
1	2	72014	KIT, END CAP STD CHARGE	1	66, 88
	6	2513027	KIT, CHG PUMP	1	7, 8, 74
	10	50975	CAPSCREW 6M X 1.0 X 25mm	2	10
	18	70521	KIT, PUMP SHAFT (15mm STRAIGHT KEYED)	1	19, 79, 89
3	2	72288	KIT, END CAP CHARGE THRU	1	66, 88
	6	70622	KIT, THRU CHG PUMP	1	7, 8, 74, 88, 327
	10	53814	SCREW, HEX CAP, 5/16-18 X 1.125	2	10
	18	70620	KIT, PUMP SHAFT (15mm, KEYED, STD CHG, THRU)	1	19, 79, 89
4	2	72014	KIT, END CAP STD CHARGE	1	66, 88
	6	2513027	KIT, CHG PUMP	1	7, 8, 74
	10	50975	CAPSCREW 6M X 1.0 X 25mm	2	10
	18	70727	KIT, PUMP SHAFT (15mm, TAPERED, KEY)	1	19, 79, 89

CHARGE RELIEF AND AUXILIARY PUMP KITS

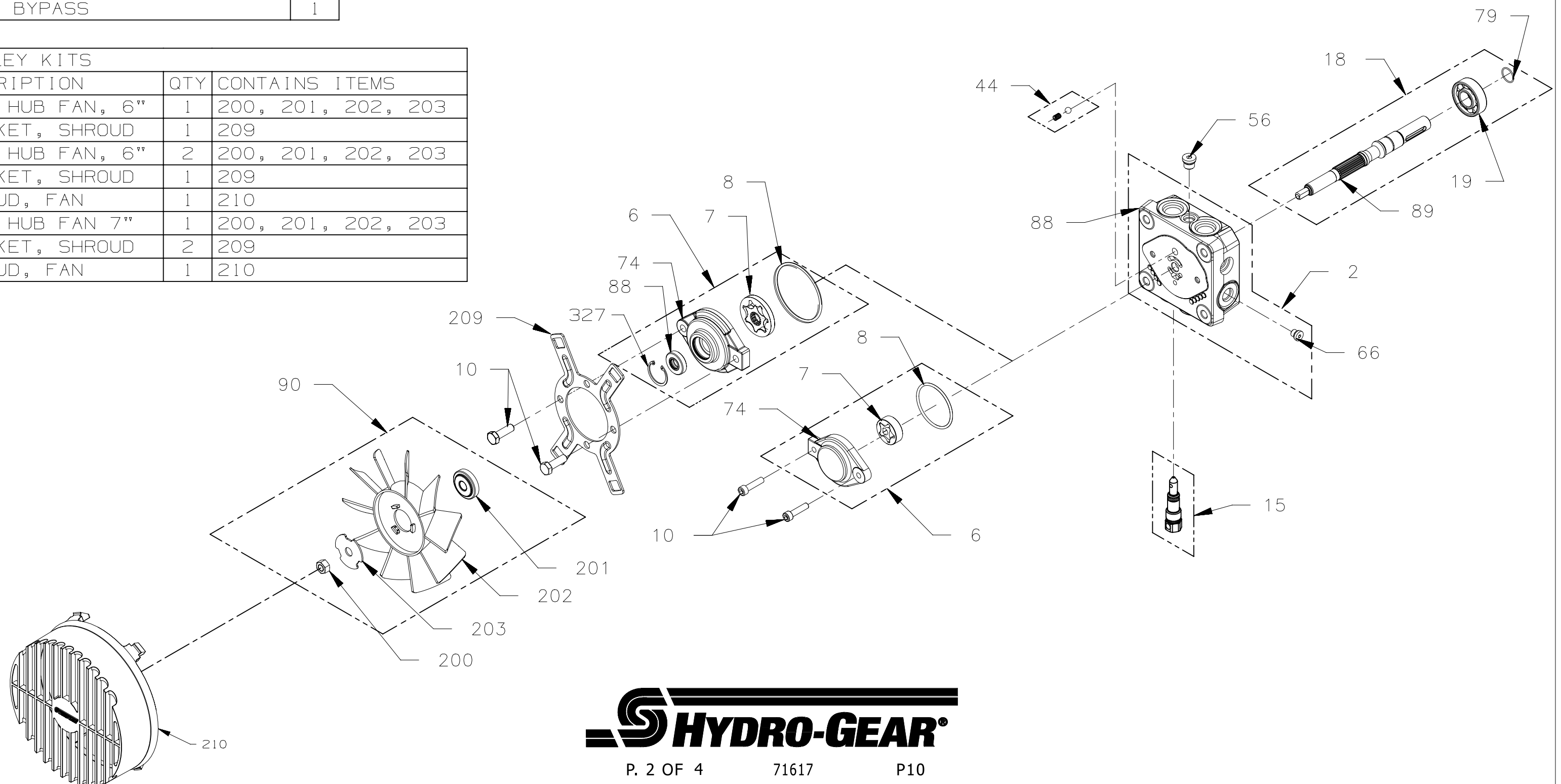
CHARACTER 7	ITEM #	COMPONENT #	DESCRIPTION	QTY
D, F	44	70402	KIT, CHARGE RELIEF VALVE	1

BYPASS KITS

CHARACTER 9	ITEM #	COMPONENT #	DESCRIPTION	QTY
1	15	2513030	KIT, BYPASS	1

FAN PULLEY KITS

CHARACTER 10	ITEM #	COMPONENT #	DESCRIPTION	QTY	CONTAINS ITEMS
B	90	71172	KIT, HUB FAN, 6"	1	200, 201, 202, 203
	209	52016	BRACKET, SHROUD	1	209
C	90	71172	KIT, HUB FAN, 6"	2	200, 201, 202, 203
	209	52016	BRACKET, SHROUD	1	209
	210	52059	SHROUD, FAN	1	210
J	90	70811	KIT, HUB FAN 7"	1	200, 201, 202, 203
	209	52355	BRACKET, SHROUD	2	209
	210	52354	SHROUD, FAN	1	210



PE SERVICE SCHEMATIC

MODEL NUMBER:

P	E
---	---

 -

		*	*
--	--	---	---

 -

--	--	--	--

 -

--	--	--	--

CHARACTER #:

1	2
---	---

 -

3	4	5	6
---	---	---	---

 -

7	8	9	10
---	---	---	----

 -

11	12	13	14
----	----	----	----

COMMON PARTS

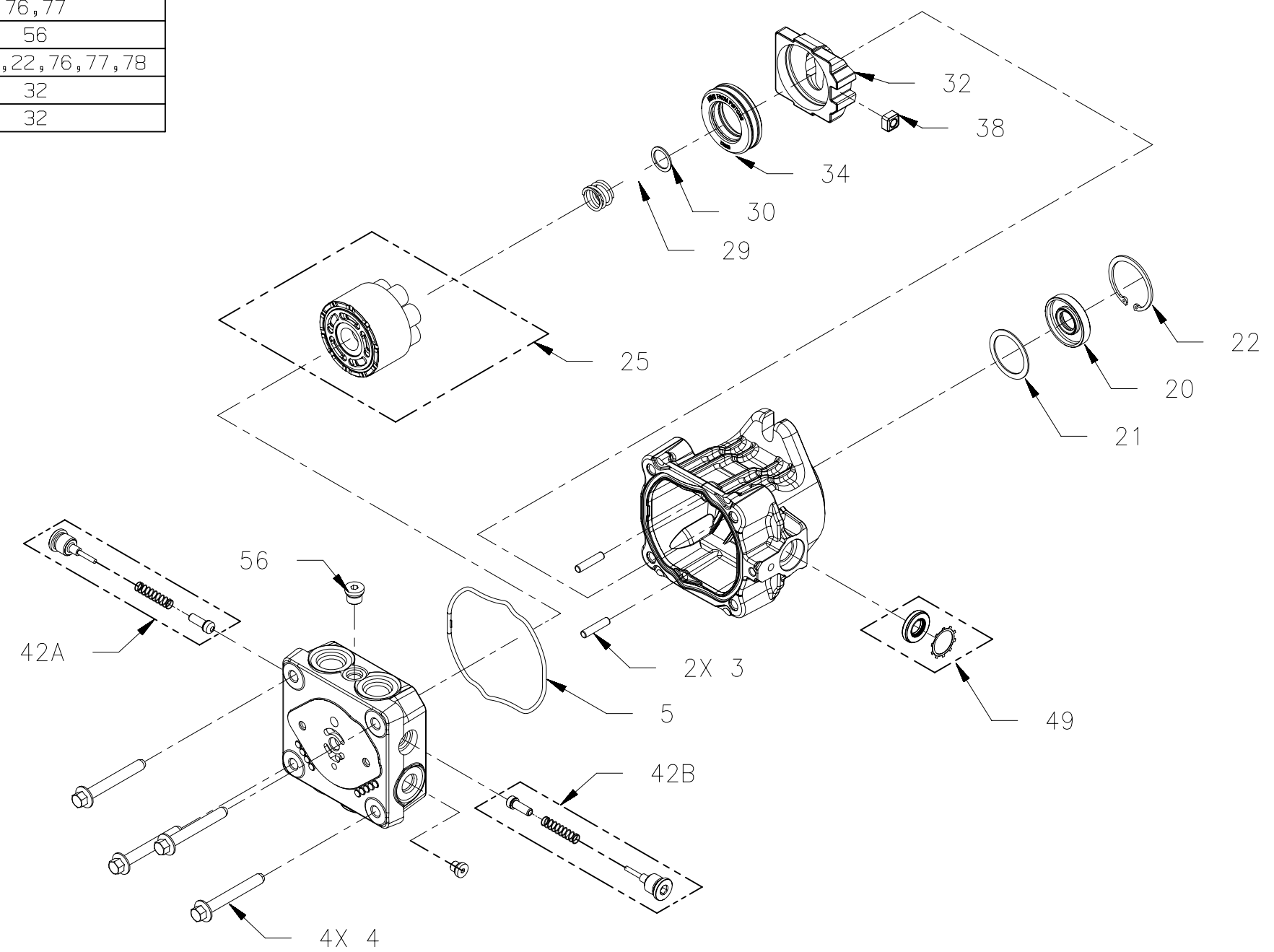
CHARACTER 2	CHARACTER 12	ITEM #	COMPONENT #	DESCRIPTION	QTY	CONTAINS ITEMS
E	L,X	3	50641	PIN, STRAIGHT HEADLESS	2	3
		4	50969	BOLT, HEX FLANGE M8-1.25 x 60mm LONG	4	4
		5	54022	O-RING, HOUSING	1	5
		20	51161	SEAL, LIP 17 x 40 x 7 PTC	1	20
		21	50951	SPACER	1	21
		22	50329	RING, RETAININ INT	1	22
		25	70331	KIT, CYLINDER BLOCK	1	25
		29	2003014	SPRING, BLOCK	1	29
		30	2003017	WASHER, BLOCK THRUST	1	30
		34	50551	BEARING, BALL THRUST	1	34
		38	2000015	GUIDE, SLOT	1	38
		49	2513043	KIT, TRUNNION SEAL / RETAINER	1	76,77
		56	9005110-4400	PLUG, 7/16-20 (METAL)	1	56
	111	70525	KIT, OVERHAUL SEAL	1	5,8,20,22,76,77,78	
	X	32	2003087	SWASHPLATE 10cc	1	32
	L	32	53998	SWASHPLATE 10cc, COATED	1	32

SHOCK VALVE KITS, "A" SIDE

CHARACTER 5	ITEM #	COMPONENT #	DESCRIPTION	QTY
A		70741	KIT, SHOCK VALVE (200 BAR, BLANK ORIFICE)	1
B		70742	KIT, SHOCK VALVE (200 BAR, .024 ORIFICE)	1
C		70743	KIT, SHOCK VALVE (200 BAR, .031 ORIFICE)	1
D		70744	KIT, SHOCK VALVE (200 BAR, .044 ORIFICE)	1
E		70836	KIT, SHOCK VALVE (160 BAR, BLANK ORIFICE)	1
F		70837	KIT, SHOCK VALVE (160 BAR, .024 ORIFICE)	1
G		70838	KIT, SHOCK VALVE (160 BAR, .031 ORIFICE)	1
H		70839	KIT, SHOCK VALVE (160 BAR, .044 ORIFICE)	1
J	42A	70840	KIT, SHOCK VALVE (120 BAR, BLANK ORIFICE)	1
K		70841	KIT, SHOCK VALVE (120 BAR, .024 ORIFICE)	1
L		70842	KIT, SHOCK VALVE (120 BAR, .031 ORIFICE)	1
M		70843	KIT, SHOCK VALVE (120 BAR, .044 ORIFICE)	1
N		2510050	KIT, CHECK VALVE (BLANK ORIFICE)	1
P		2510062	KIT, CHECK VALVE (.024 ORIFICE)	1
Q		2510027	KIT, CHECK VALVE (.031 ORIFICE)	1
R		2510034	KIT, CHECK VALVE (.044 ORIFICE)	1
T		71254	KIT, CHECK VALVE (.016 ORIFICE)	1

SHOCK VALVE KITS, "B" SIDE

CHARACTER 6	ITEM #	COMPONENT #	DESCRIPTION	QTY
A		70741	KIT, SHOCK VALVE (200 BAR, BLANK ORIFICE)	1
B		70742	KIT, SHOCK VALVE (200 BAR, .024 ORIFICE)	1
C		70743	KIT, SHOCK VALVE (200 BAR, .031 ORIFICE)	1
D		70744	KIT, SHOCK VALVE (200 BAR, .044 ORIFICE)	1
E		70836	KIT, SHOCK VALVE (160 BAR, BLANK ORIFICE)	1
F		70837	KIT, SHOCK VALVE (160 BAR, .024 ORIFICE)	1
G		70838	KIT, SHOCK VALVE (160 BAR, .031 ORIFICE)	1
H		70839	KIT, SHOCK VALVE (160 BAR, .044 ORIFICE)	1
J	42B	70840	KIT, SHOCK VALVE (120 BAR, BLANK ORIFICE)	1
K		70841	KIT, SHOCK VALVE (120 BAR, .024 ORIFICE)	1
L		70842	KIT, SHOCK VALVE (120 BAR, .031 ORIFICE)	1
M		70843	KIT, SHOCK VALVE (120 BAR, .044 ORIFICE)	1
N		2510050	KIT, CHECK VALVE (BLANK ORIFICE)	1
P		2510062	KIT, CHECK VALVE (.024 ORIFICE)	1
Q		2510027	KIT, CHECK VALVE (.031 ORIFICE)	1
R		2510034	KIT, CHECK VALVE (.044 ORIFICE)	1
T		71254	KIT, CHECK VALVE (.016 ORIFICE)	1



111 - OVERHAUL SEAL KIT, PART# 70525



PE SERVICE SCHEMATIC

MODEL NUMBER:

P	E
1	2

 -

3	4	5	6

 -

	*		
7	8	9	10

 -

	*		
11	12	13	14

TRUNNION ARM, HOUSING AND RETURN KITS

CHAR 8	CHAR 12	ITEM #	COMPONENT #	DESCRIPTION	QTY	CONTAINS ITEMS:
A,B	X	1	71717	KIT, HOUSING	1	76,77,78
	L	1	72267	KIT, HOUSING	1	76,77,78
	X,L	37	52866	ARM, TRUNNION, TAPERED SQUARE	1	37
		102	52401	SPRING, LIGHT	1	102
C,D	X	1	71717	KIT, HOUSING	1	76,77,78
	L	1	72267	KIT, HOUSING	1	76,77,78
	X,L	37	52866	ARM, TRUNNION, TAPERED SQUARE	1	37
		110	71718	KIT, RTN, CW SCISSOR, LIGHT SPRING	1	94,98,99,102,103,104,106
E,F	X	1	71717	KIT, HOUSING	1	76,77,78
	L	1	72267	KIT, HOUSING	1	76,77,78
	X,L	37	52866	ARM, TRUNNION TAPERED SQUARE	1	37
		110	71719	KIT, RTN, CCW SCISSOR, LIGHT SPRING	1	94,98,99,102,103,104,106
N,P	X	1	71717	KIT, HOUSING	1	76,77,78
	L	1	72267	KIT, HOUSING	1	76,77,78
	X,L	37	52866	ARM, TRUNNION, TAPERED SQUARE	1	37
		102	51833	SPRING, MEDIUM	1	102
Q,R	X	1	71717	KIT, HOUSING	1	76,77,78
	L	1	72267	KIT, HOUSING	1	76,77,78
	X,L	37	52866	ARM, TRUNNION, TAPERED SQUARE	1	37
		110	71742	KIT, RTN, CW SCISSOR, MEDIUM SPRING	1	94,98,99,102,103,104,106
T,U	X	1	71717	KIT, HOUSING	1	76,77,78
	L	1	72267	KIT, HOUSING	1	76,77,78
	X,L	37	52866	ARM, TRUNNION, TAPERED SQUARE	1	37
		110	71743	KIT, RTN, CCW SCISSOR, MEDIUM SPRING	1	94,98,99,102,103,104,106
4	X	1	71717	KIT, HOUSING	1	76,77,78
	L	1	72267	KIT, HOUSING	1	76,77,78
	X,L	37	52866	ARM, TRUNNION, TAPERED SQUARE	1	37
		110	71747	KIT, RTN-CCW SLOTTED SCISSOR, MED SPRING	1	94,98,99,102,103,104,106
6	X	1	71717	KIT, HOUSING	1	76,77,78
	L	1	72267	KIT, HOUSING	1	76,77,78
	X,L	37	52866	ARM, TRUNNION, TAPERED SQUARE	1	37
		110	71746	KIT, RTN-CW SLOTTED SCISSOR, MED SPRING	1	94,98,99,102,103,104,106
V,W,8	X	1	71717	KIT, HOUSING	1	76,77,78
	L	1	72267	KIT, HOUSING	1	76,77,78
	X,L	37	52866	ARM, TRUNNION, TAPERED SQUARE	1	37
		110	71744	KIT, RTN STYLE CONTROL ARM, NO SPRING	1	94,101,104,106
Y	X	1	70516	KIT, HOUSING	1	76,77,78
	L	1	72358	KIT, HOUSING	1	76,77,78
	X,L	37	2003005	ARM, TRUNNION, DOUBLE D	1	37
I	X	1	71717	KIT, HOUSING	1	76,77,78
	L	1	72267	KIT, HOUSING	1	76,77,78
	X,L	37	52866	ARM, TRUNNION, TAPERED SQUARE	1	37

